

# Pooled Budgets for Health and Social Care

## Wellbeing Impact Assessment Report

This report summarises the likely impact of a proposal on the social, economic, environmental and cultural well-being of Denbighshire, Wales and the world.

Assessment Number:	304
--------------------	-----

Brief description:	<p>A Regional Pooled Budgets group has been established and is Chaired by Nicola Stubbins, Director of Social Services on behalf of partners. This group has been meeting since the beginning of the year and it is the view of this group and Directors of Social Services that integration and pooled budgets should not be finance-led and that social care and health leaders need to propose areas for integration. In its highlight report in January 2017 the group highlighted areas that could be explored further in relation to integration and pooled budgets which were: - IFSS - Delivering Transformation funding - ICF - Children with complex needs - Carers grant - Regional Safeguarding - Disability equipment stores (essentially developing what's already in place) - Funded Nursing care element of care homes budget There was also a suggestion that some localities may be able to pilot the pooling of care home budgets where services were already integrated such as Ffordd Gwynedd. 4.2 Further work undertaken by the Regional Pooled Budgets group and in its report to the NWRPB in June 2017 it was reported that the group were developing a regional Integration Agreement which would be signed by the 6 Local Authorities and the Health Board with individual schedules developed for each area of integration and pooled budgets which would sit beneath this agreement. The areas confirmed as those to be developed as pooled budgets would be: - Intermediate Care Fund (ICF) – It has been a requirement of the grant to have a Memorandum of Understanding in place however, a Partnership Agreement would strengthen the arrangements in place (and this is what WG is specifying in the Part 9 Guidance) - Carer's grant/services – to initially start with putting a Partnership Agreement around the grant and then look to incorporate other carer's services from April 2018 - Children with complex needs – this area has already been identified as a priority area for integration by the NWRPB - Integrated Family Support Services – this is a requirement in the Act - Community services – Care homes and Domiciliary care – Ffordd Gwynedd</p>
Date Completed:	19/10/2017 10:43:35 Version: 1
Completed by:	Nicola Stubbins
Responsible Service:	Community Support Services
Localities affected by the proposal:	Whole County,

# IMPACT ASSESSMENT SUMMARY AND CONCLUSION

Before we look in detail at the contribution and impact of the proposal, it is important to consider how the proposal is applying the sustainable development principle. This means that we must act "in a manner which seeks to ensure that the needs of the present are met without compromising the ability of future generations to meet their own needs."

## Score for the sustainability of the approach

Could some small changes in your thinking produce a better result?

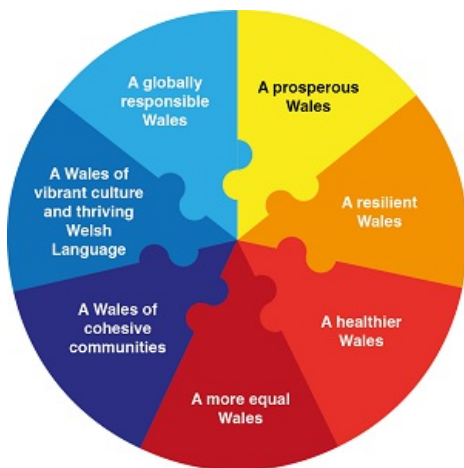


(3 out of 4 stars)

Actual score : 20 / 24.

## Summary of impact

Wellbeing Goals



A prosperous Denbighshire	Neutral
A resilient Denbighshire	Neutral
A healthier Denbighshire	Positive
A more equal Denbighshire	Positive
A Denbighshire of cohesive communities	Positive
A Denbighshire of vibrant culture and thriving Welsh language	Positive
A globally responsible Denbighshire	Positive

## Main conclusions

This is the second impact assessment undertaken and whilst the project remains at an early stage, significant progress has taken shape in the form of an integration agreement which sets out the framework for partners across the region to take integration and pooling of budgets forward. The impact assessment will need to be continually reviewed and revised as the project develops but consideration will also need to be given to completing individual impact assessments for each integration / pooled budgets pilot flowing from the integration agreement itself.

# THE LIKELY IMPACT ON DENBIGHSHIRE, WALES AND THE WORLD

## A prosperous Denbighshire

Overall Impact	Neutral
Justification for impact	A vision is set out in our Integration Agreement stating our intentions to integrate services and improve outcomes for individuals across the region, however the pilots for pooled budgets that will sit under this agreement have not progressed sufficiently to evaluate the overall impact at this time. The learning from these will shape further development around integration of services and pooled budgets.

### Positive consequences identified:

Until the pilots for pooled budgets have progressed further this is unknown at present

Development may result in opportunities for community resilience initiatives

It is unclear as the development of integration and pooled budgets is at an early stage. There will be some pilot developments in localities across North Wales and learning from these will provide a clearer understanding.

It is unclear as the development of integration and pooled budgets is at an early stage. There will be some pilot developments in localities across North Wales and learning from these will provide a clearer understanding.

Until the pilots for pooled budgets have progressed further this is unknown at present

Until the pilots for pooled budgets have progressed further this is unknown at present

### Unintended negative consequences identified:

Until the pilots for pooled budgets have progressed further this is unknown at present

Integrating services across Health and Social Care could result in negative impact on current employee terms and conditions

### Mitigating actions:

Once the pooled budget pilots have progressed further this impact assessment will be revisited

## A resilient Denbighshire

Overall Impact	Neutral
Justification for impact	Currently we are not clear about the impact in relation to resilience however we would strive to ensure that any integration and pooling of budgets strengthens community resilience

### Positive consequences identified:

It is unclear as the development of integration and pooled budgets remains at an early stage. The pilot developments in localities across North Wales will inform learning and provide a clearer understanding

## Unintended negative consequences identified:

Regional working may incur longer travelling times

## Mitigating actions:

Unknown at present time

## A healthier Denbighshire

Overall Impact	Positive
Justification for impact	To improve outcomes and health and well-being and provide person centred care and support

## Positive consequences identified:

The focus of the Social Services and Well-being Act is improving outcomes for citizens to include integration of services for all parts of the populations which includes social and physical environments  
Community resilience / early intervention initiatives could include luncheon clubs for the elderly and provision of meals for vulnerable people, however it will depend on which services are agreed to fall within scope

Community resilience / early intervention initiatives could include accessing leisure facilities for different groups in the population - however it will depend on which services are agreed to fall within scope

Improve care and support, ensuring older people with more complex needs and long term conditions, and that citizens who are in need of care and support have voice, choice and control

Integration of health and social care services including the pooling of budgets will provide a mechanism for delivering this

## Unintended negative consequences identified:

## Mitigating actions:

Having agreed to enter into an Integration Agreement the partners have expressed commitment to regional integrated working including the pooling of budgets as mandated by law and where it will benefit service users. Consultation with service users and staff so that we deliver the outcome that is right for them.

## A more equal Denbighshire

Overall Impact	Positive
Justification for impact	To improve care and support, ensuring people have more say and control by providing co-ordinated, person centred care and support

## Positive consequences identified:

We deliver integrated services for Children with complex needs, Older people with complex needs, people with learning disabilities and carers. There may be further opportunities to integrate services and pool budgets to improve the well-being of a wider group of people with protected characteristics however they are not currently in scope

As this is integration of health and social care services, health inequalities for areas within scope

should be improved

Using the What Matters within service delivery across Health and Social Care should improve this aspect for individuals

**Unintended negative consequences identified:**

**Mitigating actions:**

Ensuring equity of service position across the region

**A Denbighshire of cohesive communities**

Overall Impact	Positive
Justification for impact	Integration should only be undertaken with citizens at the heart of service delivery and integration of services should only be undertaken where there is evidence of better outcomes for citizens.

**Positive consequences identified:**

Within health and social care services the safeguarding of individuals remains the paramount concern regardless of integration of pooling of budgets

This is a fundamental aspect in providing services within the spirit and ethos of the Act

**Unintended negative consequences identified:**

**Mitigating actions:**

An options appraisal toolkit has been developed regionally to ensure that integration has citizens at the heart of service delivery.

**A Denbighshire of vibrant culture and thriving Welsh language**

Overall Impact	Positive
Justification for impact	People who prefer to receive services in Welsh will do so

**Positive consequences identified:**

Mwy Na Geiriau requires health and social care services to be delivered in the service users language of choice

Services will be promoted on a bilingual basis, some of the regions business language is Welsh

Utilise events across the region to promote the Welsh culture within health and social care services

**Unintended negative consequences identified:**

**Mitigating actions:**

This may cause issues for staff that are not currently Welsh speakers

## A globally responsible Denbighshire

Overall Impact	Positive
Justification for impact	Utilise local businesses so that they continue to thrive within communities

### **Positive consequences identified:**

There are a number of independent third sector providers locally based within the region who need support to continue to thrive

This is managed within contractual and employment terms and conditions

Providers may have to revisit objectives when we move to a region based approach

### **Unintended negative consequences identified:**

### **Mitigating actions:**